

Work plan

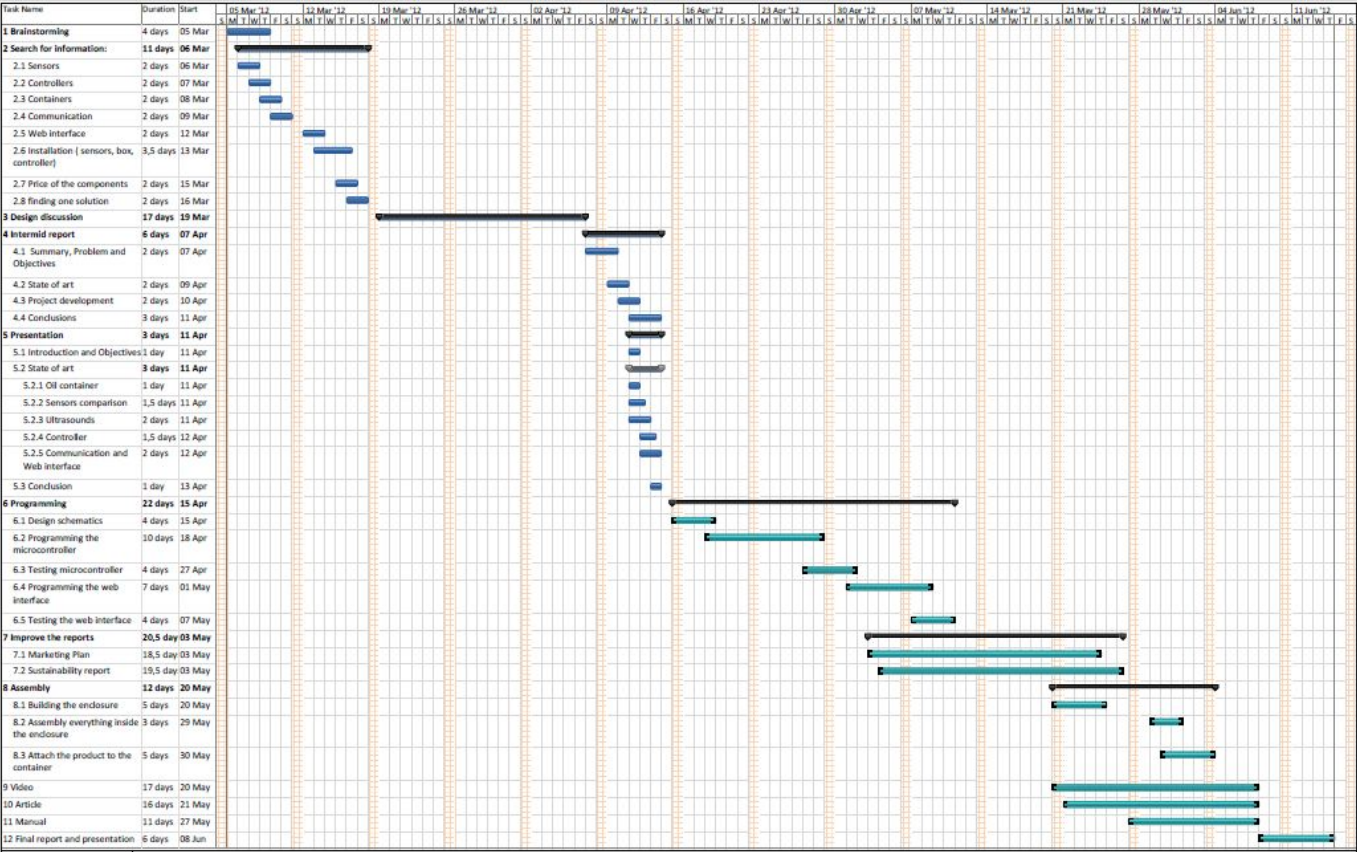
Deadlines

- 2012-03-15 Hand in Tasks (what must be done), Task allocation (who does what) and Gantt chart (when)
- 2012-03-30 Hand in list of material (what, quantity, where to buy - local companies)
- 2012-04-14 Hand in Interim Report (Introduction, including the tasks, team members allocation and Gantt chart), State of the Art, Marketing Plan, Ecological Footprint and Sustainability, Proposed Solution and Bibliography chapters) and Presentation
- 2012-04-19 Presentation and Discussion
- 2012-06-09 Hand in Final Report, Video, Paper and Poster
- 2012-06-14 Final Presentation, Individual Discussion and Assessment
- 2012-06-15 Hand-in the Prototype and User Manual to the client

Tasks

Task	Responsible
Sensors and control	Marcos
Container	Olga and Mihkel
Enclosure	Mihkel and Naeem
Web interface	Marcos
Marketing	Naeem and Mihkel
Sustainability	Olga,Marcos and Mihkel
Design the schematics	Marcos
Programming the micro-controllers	Marcos
Design the website and interface	Marcos
Leaflet and poster	Olga and Mihkel
Improve the sustainability report	Olga and Mihkel
Improve the marketing plan	Naeem and Mihkel
Video	Naeem and Mihkel
Paper (Article)	Olga and Marcos
Manual assembly	Olga,Marcos,Naeem and Mihkel
Testing	Olga,Marcos,Naeem and Mihkel
Final presentation and final report	Olga,Marcos,Naeem and Mihkel

Gantt Chart



From:
<https://www.eps2012-wiki4.dee.isep.ipp.pt/> - **EPS2012-wiki4**

Permanent link:
<https://www.eps2012-wiki4.dee.isep.ipp.pt/doku.php?id=plan>

Last update: **2012/07/10 12:05**

